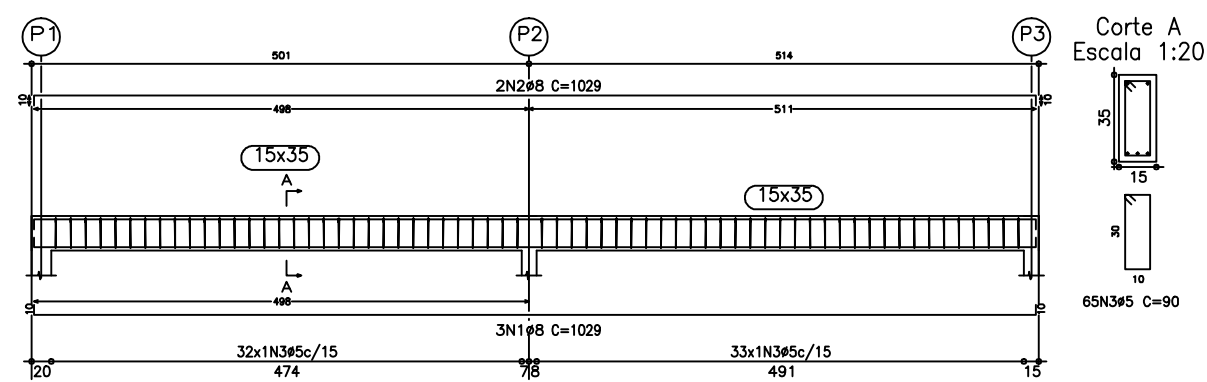
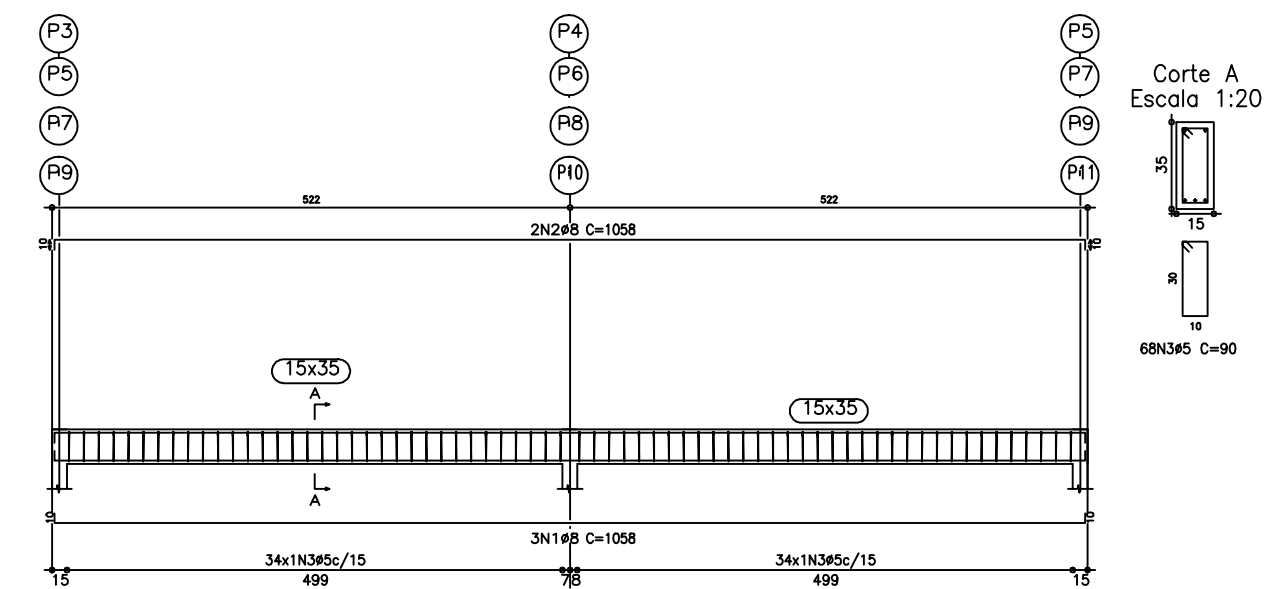


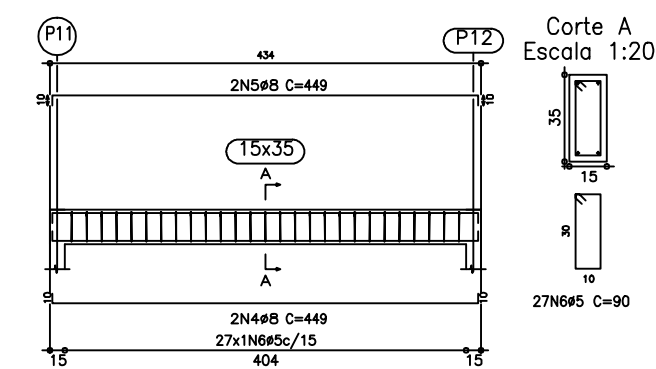
V 1
Escala 1:50



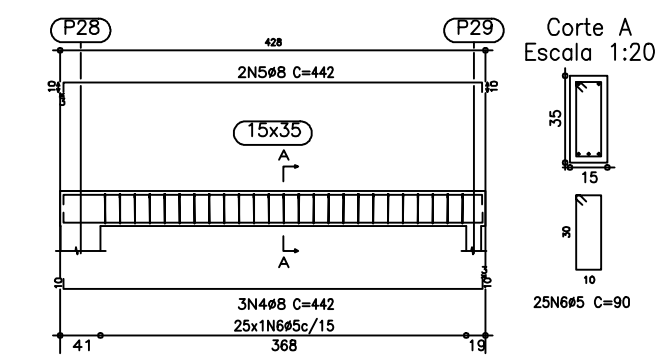
V 2
V 3
V 4
V 5
Escala 1:50



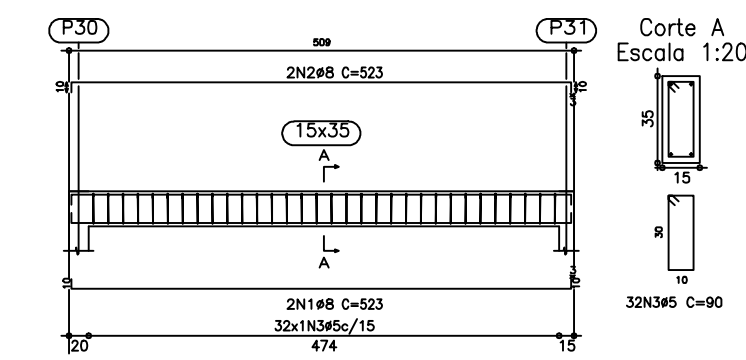
V 6
Escala 1:50



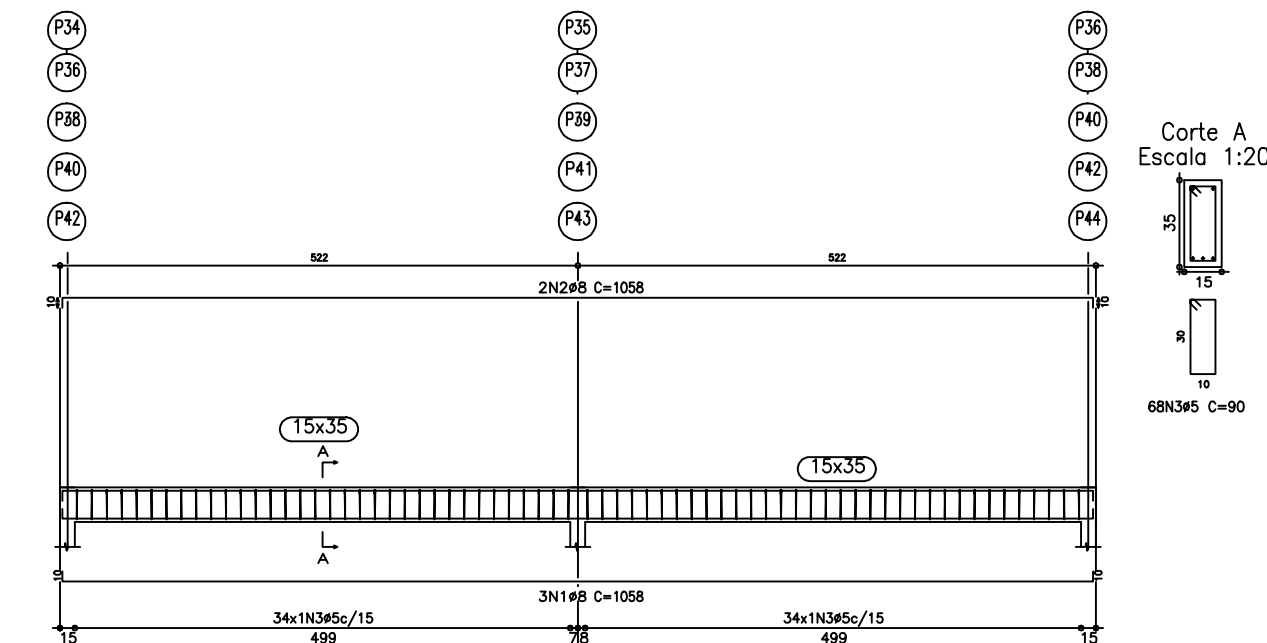
V 6
Escala 1:50



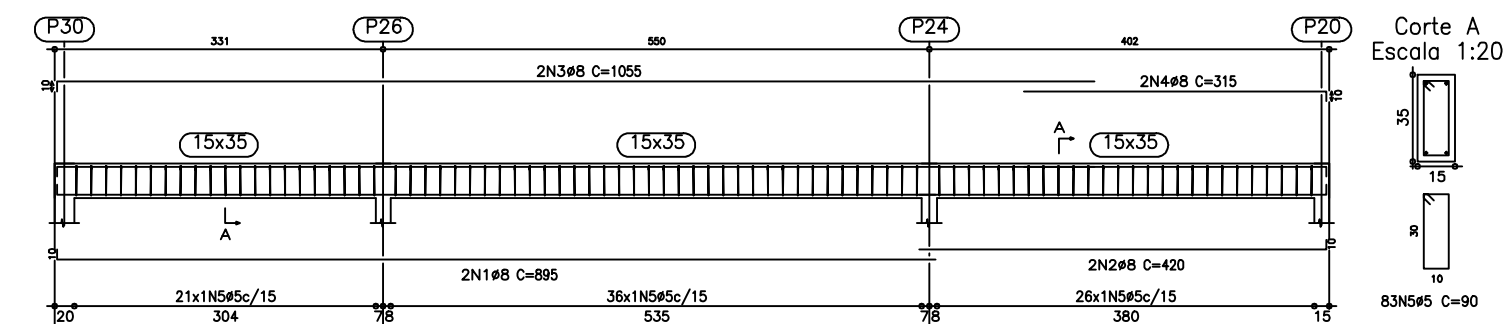
V 7
Escala 1:50



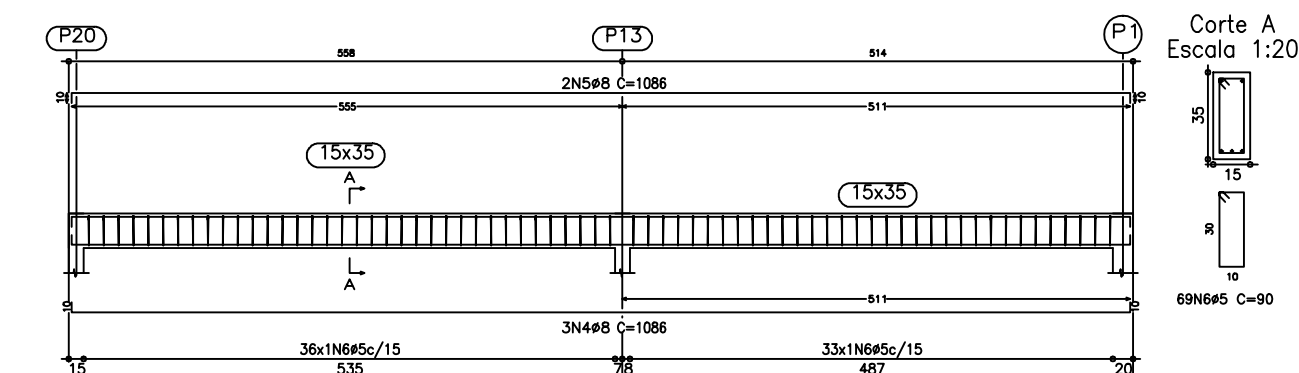
VC9
VC10
VC11
VC12
VC13
Escala 1:50



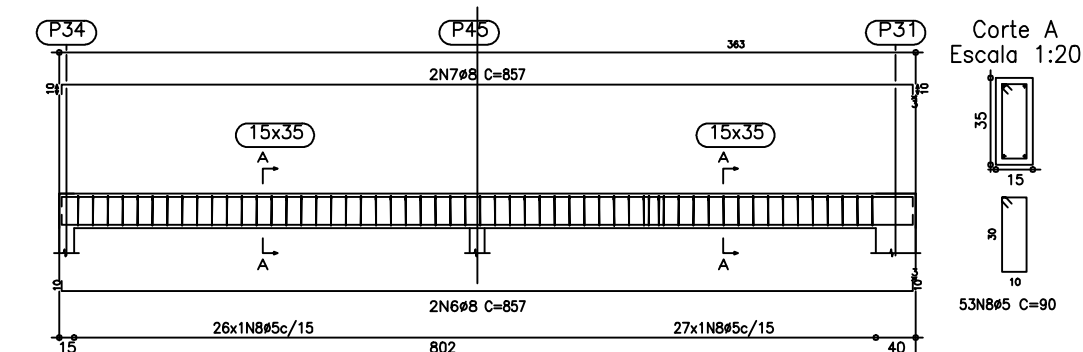
V 14
Escala 1:50



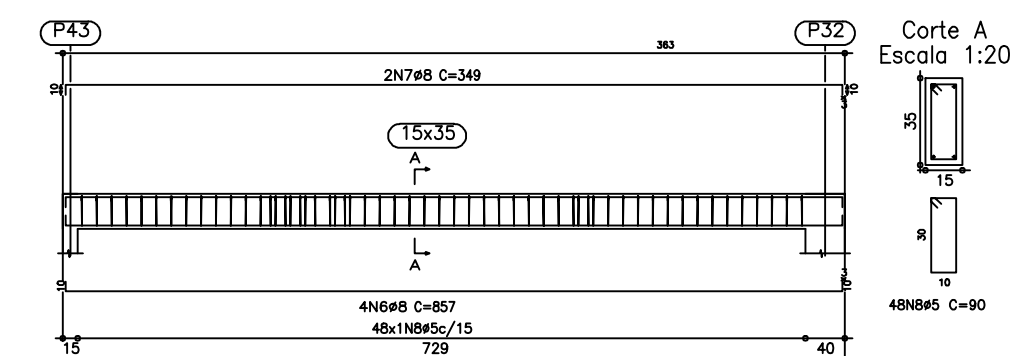
V 15
Escala 1:50



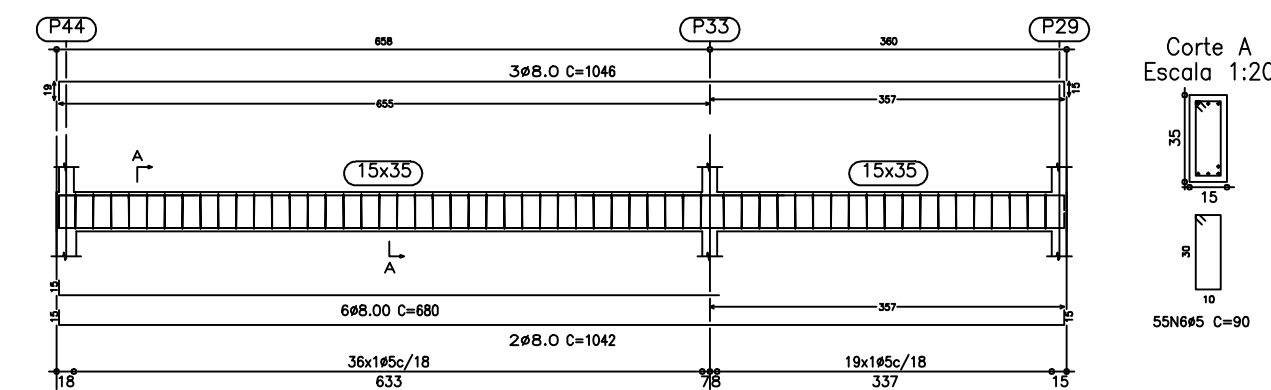
V 16
Escala 1:50



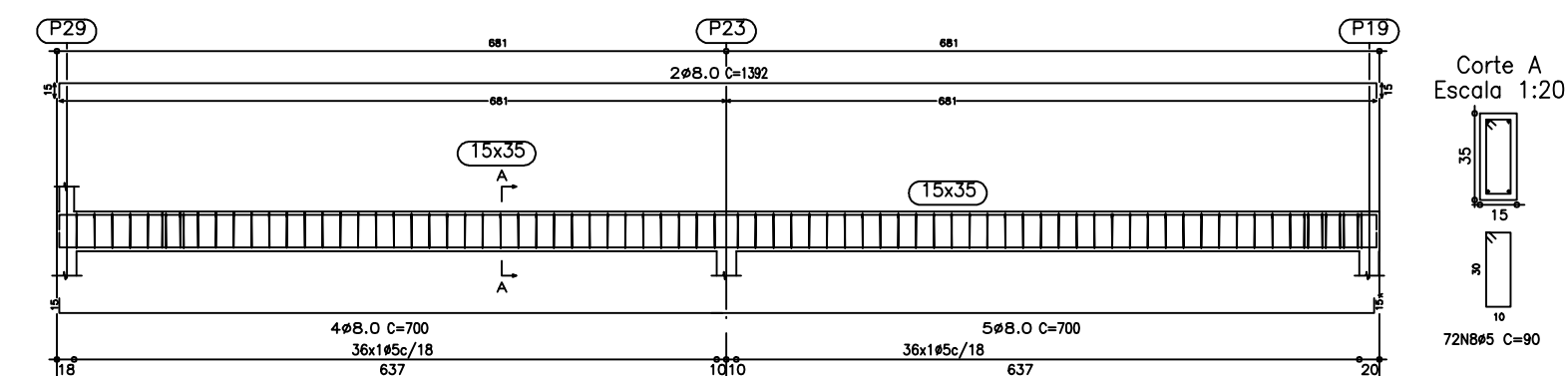
V 17
Escala 1:50



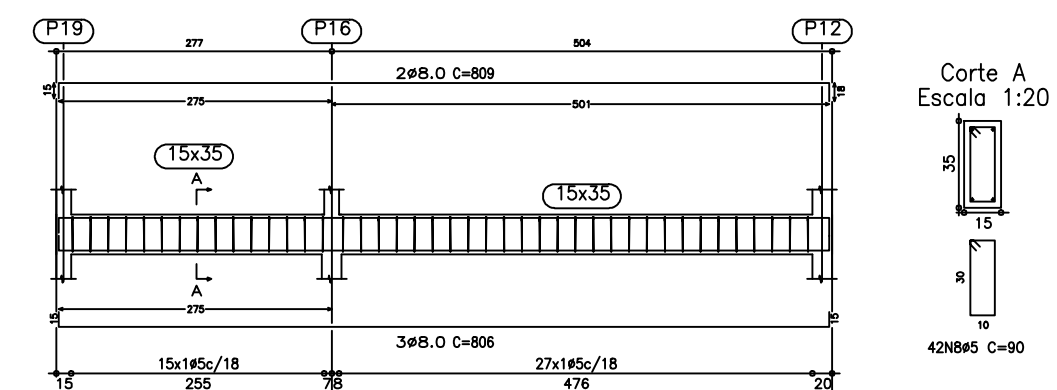
V 18
Escala 1:50



V 19
Escala 1:50



V 19
Escala 1:50



GINÁSIO MUNICIPAL

DETALHAMENTO VIGAS NÍVEL COBERTURA

- ÁREA GINÁSIO : 1.870,71 m²
- ÁREA MEZANINO : 117,16 m²
- ÁREA TOTAL : 1.787,78 m²

PREFEITURA MUNICIPAL DE
SANTO ANTÔNIO DO PLANALTO

**APROVADO E
LICENCIADO**

DATA: 27/03/2020

Ass.: _____

Prefeitura Municipal
Santo Antonio do Planalto

Av. Jorge Muller 1075 Centro
Santo Antonio do Planalto - RS
(54) 33771800

RESPONSÁVEL TÉCNICO P/PROJETO		DESENHO:	
Eng. Civil : Alexandre Menegazzo - CREA:RS/187276		ALEXANDRE	
OBRA		ÁREA	
CONSTRUÇÃO DE GINÁSIO MUNICIPAL		1.787,78m ²	
ENDEREÇO		Rua helmuth Kirnuss	
PROJETO		ASSUNTO	
ESTRUTURAL		VIGAS NÍVEL COBERTURA	
ESCALA		DATA	
1:75 - A1		MARÇO DE 2020	
		Nº PRANCHA	
		EST-10/11	